

RENQIU AOCHEN INTERNATIONAL CO., LTD (AC INDUSTRIES CO., LTD)

OFFICE ADDRESS: NORTH BOHAI WEST ROAD RENQIU CITY HEBEI PROVINCE CHINA.

FACTORY ADDRESS: NORTH OF RENQIU ECONOMIC DEVELOPMENT ZONE(NIU CUN DEVELOPMENT ZONE)

TEL:+86 317 2755 826

Email:sales@aochenindustries.com

www.aochenindustries.com

AC INDUSTRIES

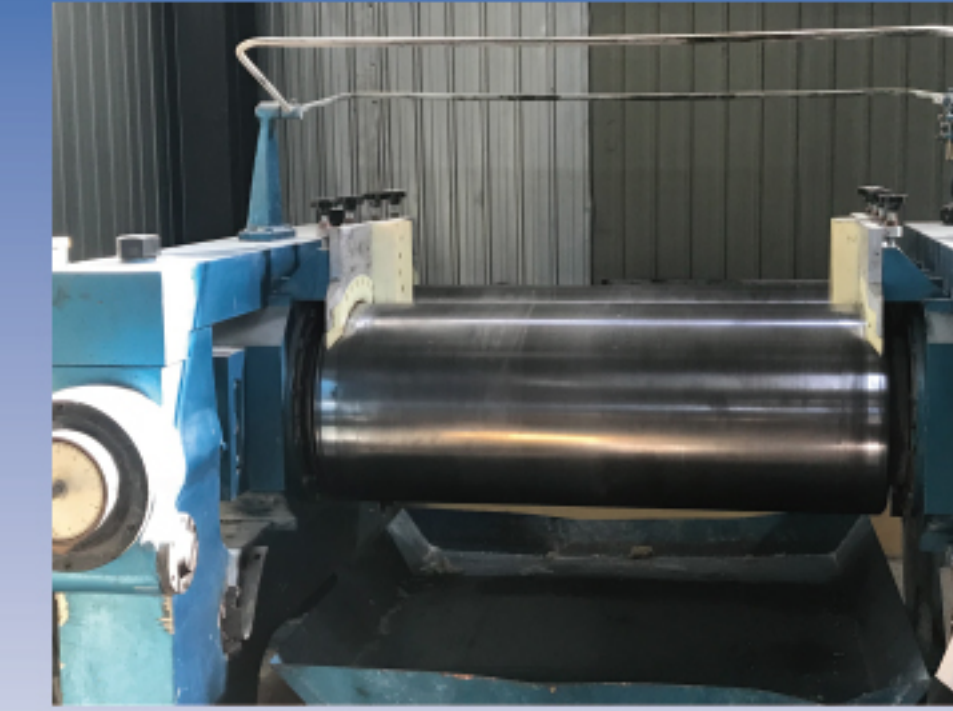
RENQIU AOCHEN INTERNATIONAL CO., LTD



INTRODUCTION

We are a leading manufacturer of rubber sheets and rubber mats in Renqiu city where is adjacent the **Xiong'an New Area** in North China's Hebei Province. Our staff are all with over 15 years' experiences and our factory is brand new.

- Our factory is 160km away from Beijing International Airport and 180km to Tianjin Port.
- Factory cover an area of 13,000 sqm.
- 6 sets Rotocure Machines (1set with maximum with 2.2m)
9 sets Plate Vulcanizer Machines.
- Owned 10 sales person, 3 R&D persons, 150 workers
- All testing machines with Gotech brand which are made of Taiwan. Both the raw material and the rubber compound need to be tested before starting manufacture.
- Strictly comply to ISO9001 and Reach and Pahs are under applying for.



Testing machine



Testing room



Density Determination Kit



Tensile Tester



Aging Oven



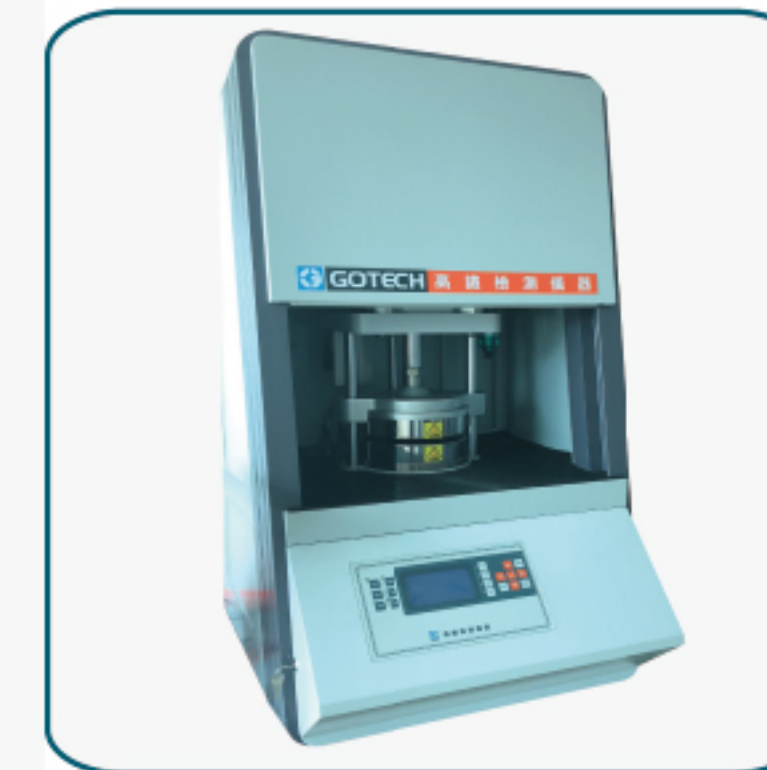
Hardness Tester



Compress And Deformation Tester



Moving Die Rheometer



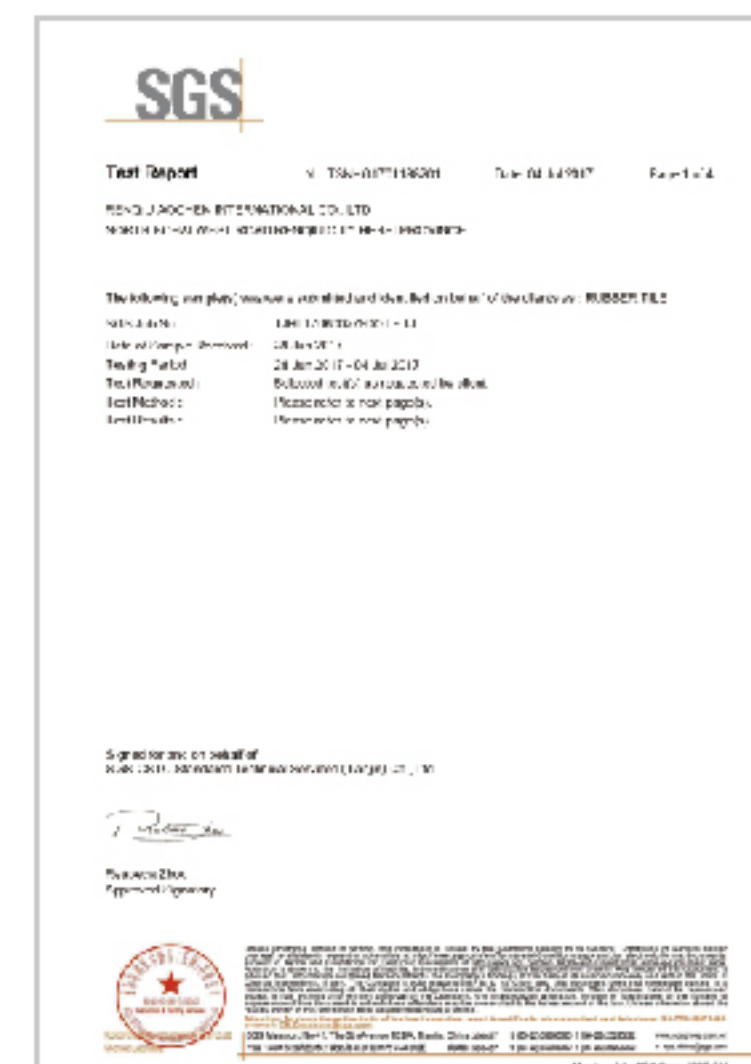
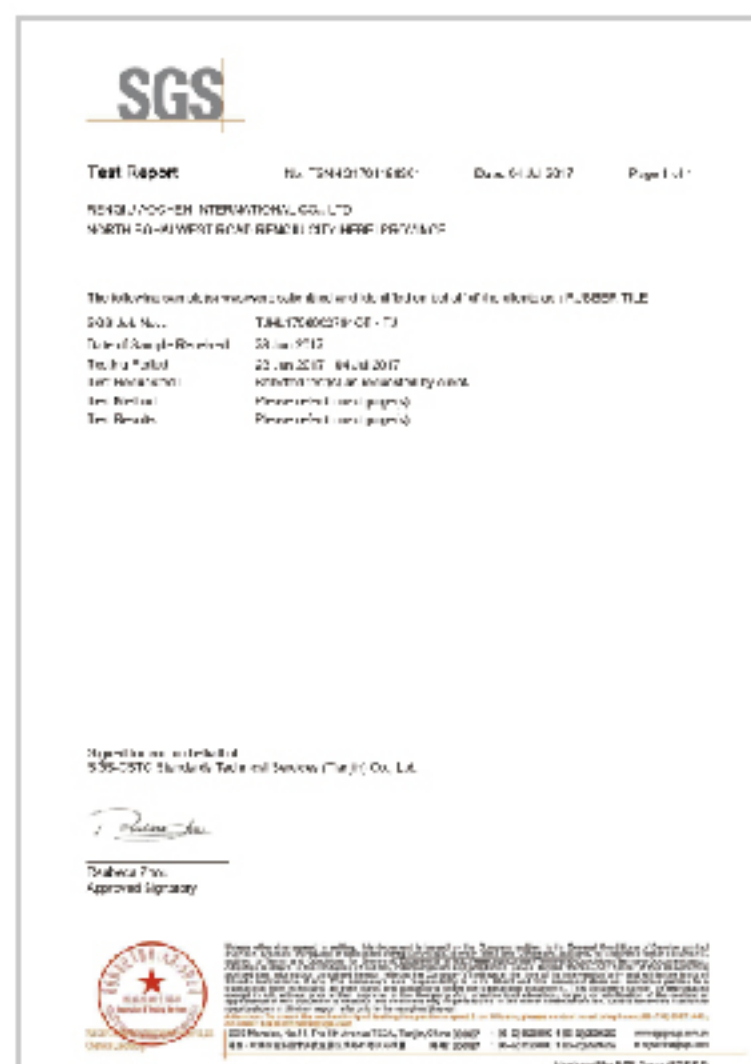
Mooney Viscometer



DIN Abrasion Resistance Tester



Oil Bath

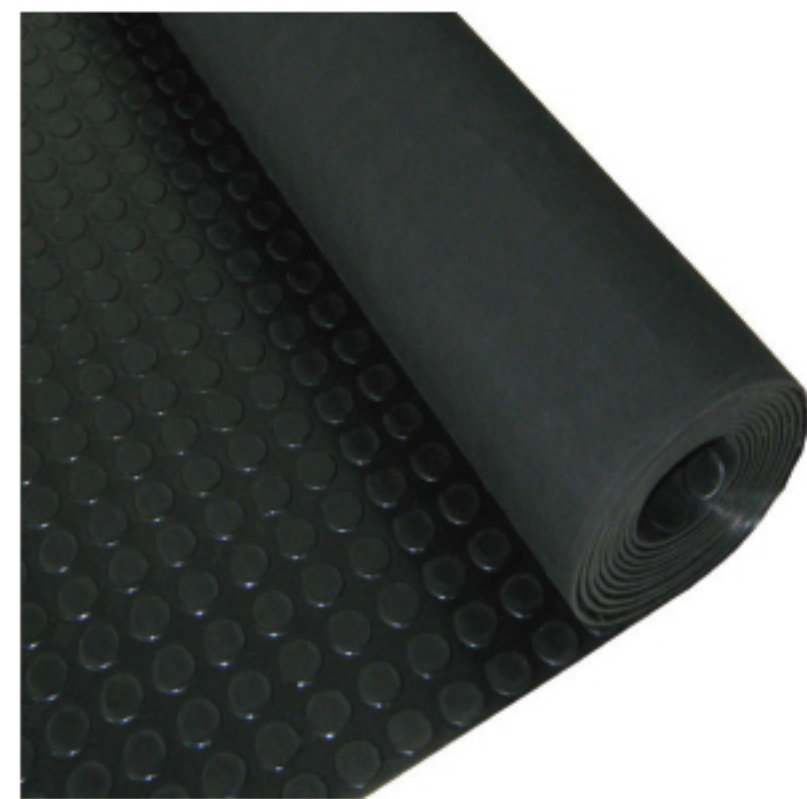


Testing report

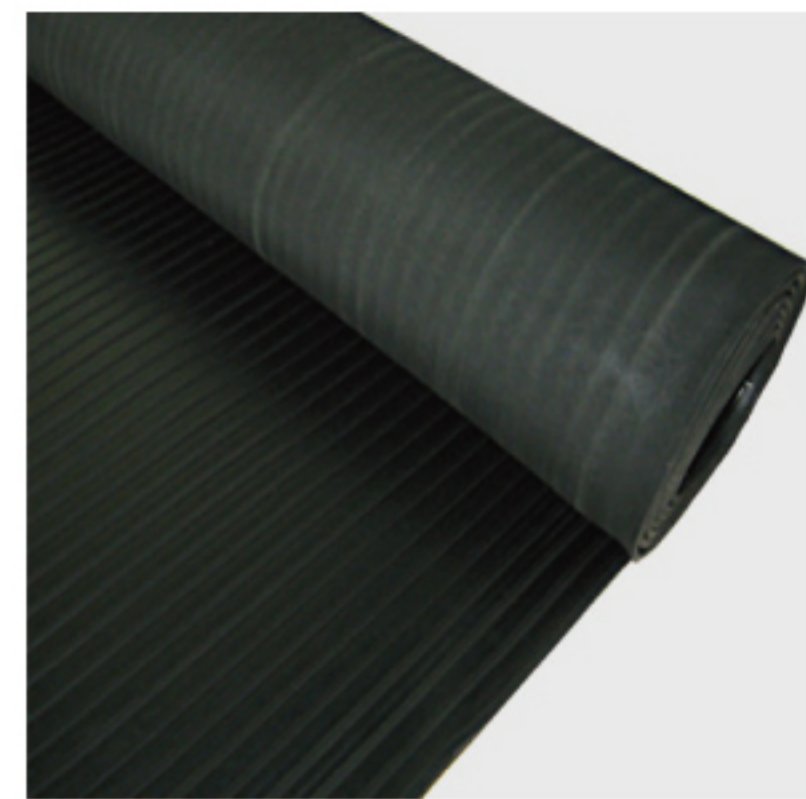
ANTI-SLIP FLOOR

- Different anti-slip surface: Round dot, Fine ribbed, Checker plate, Willow, Board ribbed, Pyramid patterns etc.
- Width, length and color is available on customers' request.
- Widely used for ground entranceways, doors, stairs, ramps etc.
- Wear resistance, pressure resistance, shock absorption and noise reduction, easy to install and clean, quick drying.

Hardness	Specific Gravity	Tensile Strength	Elongation	Tear Strength
Shore A	g/cm ³	MPA	%	Kg/cm ²
65+/-5	1.5	3	250	22
Size	3-8mmx1-1.6mx10/15/20m			
Color	Red, green, grey, blue, black			



1313 Round dot rubber sheet



1317 Board ribbed rubber sheet



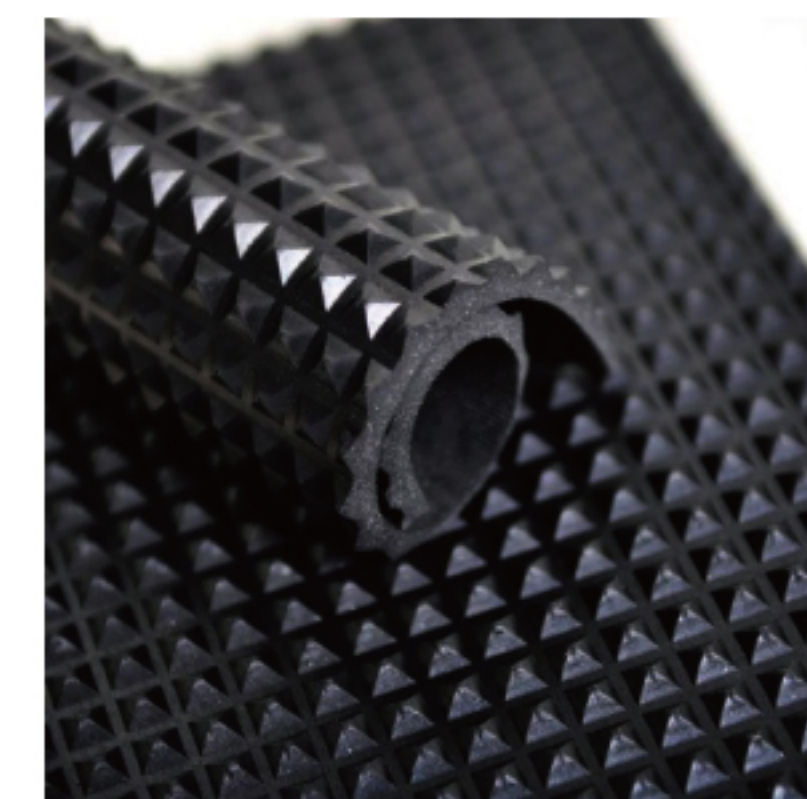
1315 Checker plate rubber sheet



1316 Willow rubber sheet



1314 Fine ribbed rubber sheet



1320 Pyramid rubber sheet

INDUSTRIAL RUBBER SHEET

Cloth and nylon insertion available

Smooth and fabric surface pattern available



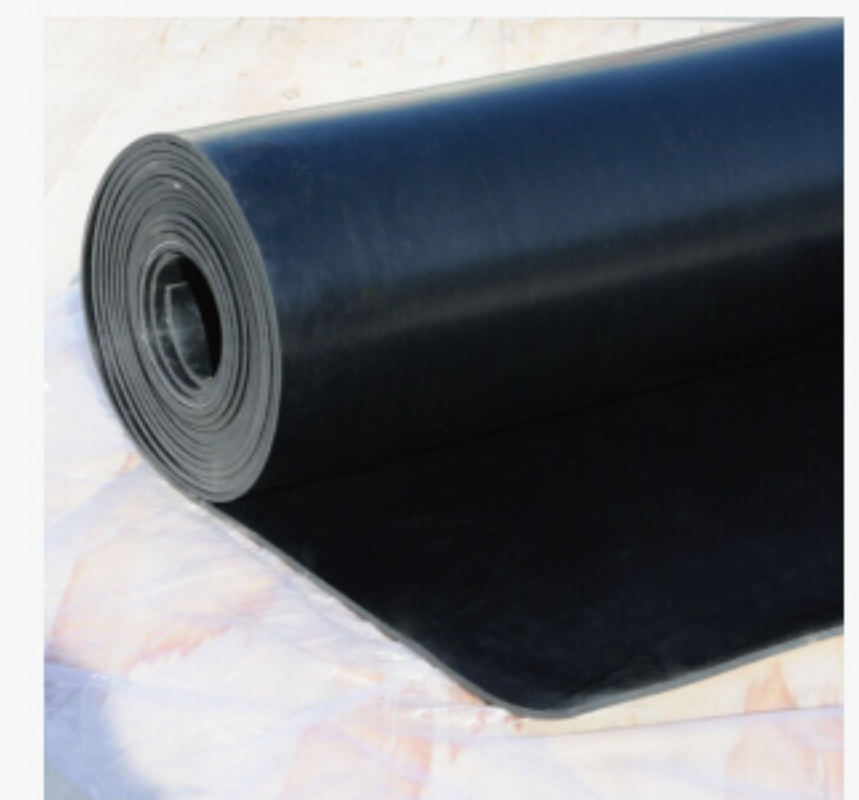
1301 SBR rubber sheet

Aging resistance, abrasion resistance, heat resistance, excellent wear resistance properties. Widely used in general cushioning part, seals, etc.

Specific Gravity (g/cm ³)	Hardness (Shore A)	Tensile Strength (Mpa)	Elongation at break (%)	Color
1.7	65±5	2	150	Black or other
1.6	65±5	2.5	150	Black or other
1.5	65±5	3	200	Black or other
1.45	65±5	4	200	Black or other
1.4	65±5	5	250	Black or other
1-20mmx1-2mx10-20m				

1302 NBR rubber sheet

Oil-proof, weather resistance, high wear resistance, good heat resistance and strong adhesion. Used in various oil resistant rubber products, a variety of oil resistant gaskets, casing, flexible packaging and so on.

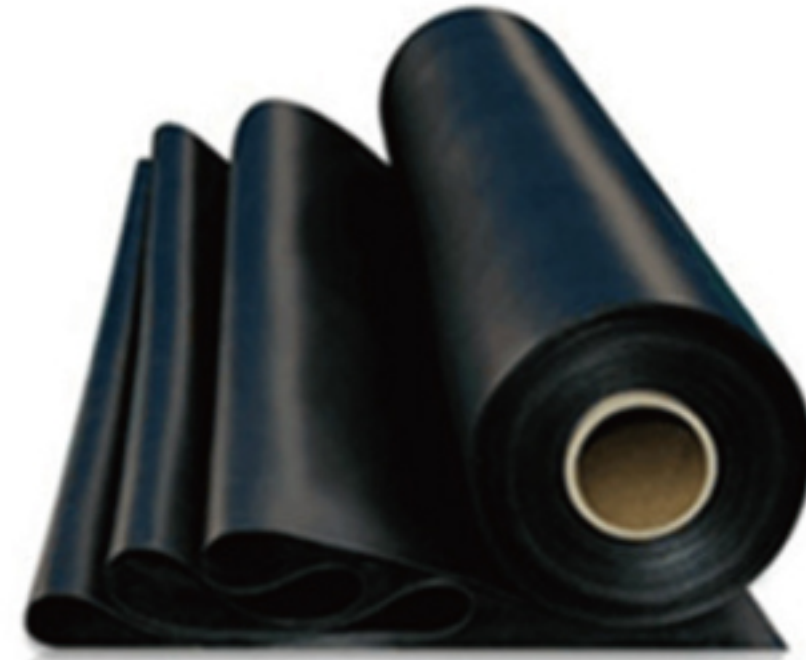


Specific Gravity (g/cm ³)	Hardness (Shore A)	Tensile Strength (Mpa)	Elongation at break (%)	Content (%)	Color
1.50	65±5	3	200	5-30	Black
1.45	65±5	4	200		
1.40	65±5	5	250		
1-20mmx1-2mx10-20m					

INDUSTRIAL RUBBER SHEET

1303 CR rubber sheet

Superior resistance to ozone, oils, weather and heat, excellent resistance to mechanical and abrasion properties, resistance to alkalis and acids. Used for gaskets, seals and matting.



Specific Gravity (g/cm ³)	Hardness (Shore A)	Tensile Strength (Mpa)	Elongation at break (%)	Content (%)	Color
1.50	65±5	3	200	5-30	Black
1.45	65±5	4	200		
1.40	65±5	5	250		
1-20mmx1-2mx10-20m					

1304 NR rubber sheet

Moderate hardness, high tensile strength, no smell and good abrasion resistance and elasticity. Used for seal gasket and others which have abrasion resistance, anti-impact and good cushion performance.



Specific Gravity (g/cm ³)	Hardness (Shore A)	Tensile Strength (Mpa)	Elongation at break (%)	Color
1.05	40±5	22	700	Grey, Beige
1.2	45±5	15	600	Red, Black
1-20mmx1-2mx10-20m				

INDUSTRIAL RUBBER SHEET

1305 EPDM rubber sheet

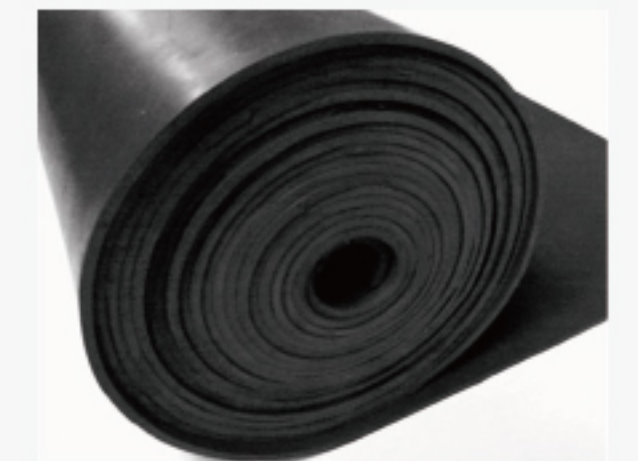
Excellent resistance to heat, ozone and sunlight and good resistance to alkalis, acids and oxygenated solvents. Used for rubber construction of bridge engineering, roof water proof, rubber washer and sealing etc.



Specific Gravity (g/cm ³)	Hardness (Shore A)	Tensile Strength (Mpa)	Elongation at break (%)	Content (%)	Color
1.50	65±5	3	200	5-30	Black
1.45	65±5	4	200		
1.40	65±5	5	250		
1-20mmx1-2mx10-20m					

1307 Hypalon rubber sheet

Very resistant to ozone and corrosive chemicals. Used for gaskets, matting etc.



Specific Gravity (g/cm ³)	Hardness (Shore A)	Tensile Strength (Mpa)	Elongation at break (%)	Color
1.35±0.02	65±5	6	350	Black
1-20mmx1-2mx10-20m				

1310 FDA white nitrile rubber sheet

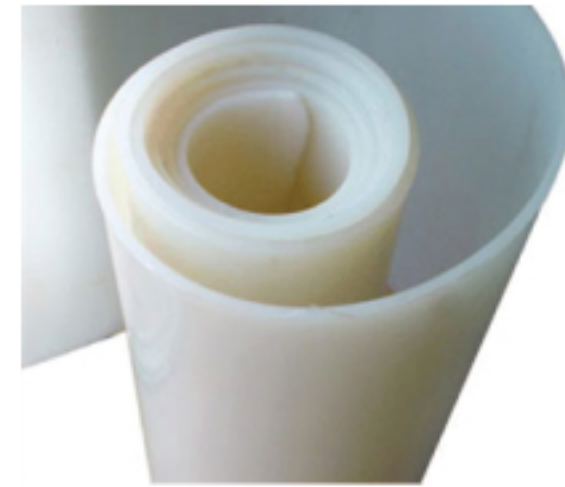
For food sector



Specific Gravity (g/cm ³)	Hardness (Shore A)	Tensile Strength (Mpa)	Elongation at break (%)	Color
1.50	65±5	≥6	250	White
1-20mmx1-2mx10-20m				

1311 Silicone rubber sheet

Resistance to heat, ultra-violet light, ozone and weathering.
Used for matting and gaskets.



Specific Gravity (g/cm ³)	Hardness (Shore A)	Elongation at break (%)	Color
1.2	60±5	360	Black transparent white red

1312 Viton rubber sheet

Excellent resistance to oxygen, ozone and oil, high temperature resistance, chemical corrosion resistance, aging resistance.
Coining various sealing components, gaskets and cylinder mould linings as well as application in aerospace and aviation fields.

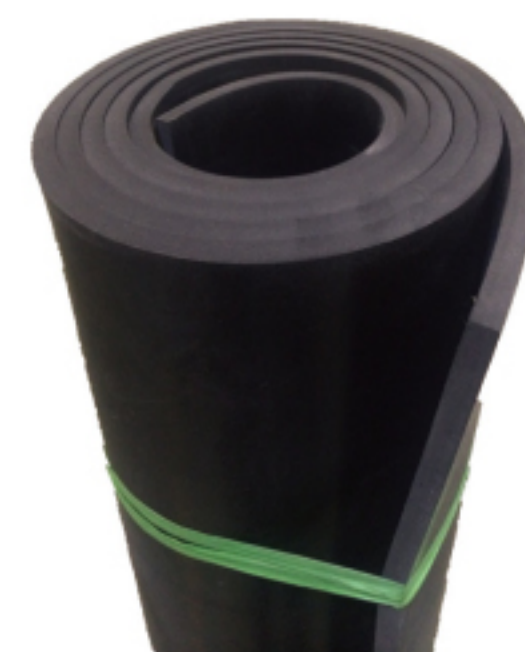


Specific Gravity (g/cm ³)	Hardness (Shore A)	Tensile Strength (Mpa)	Elongation at break (%)	Color
2	75 ± 5	5	400	Black
2	75 ± 5	7	500	
1-20mmx1-2mx10-20m				

1309 Sponge rubber sheet

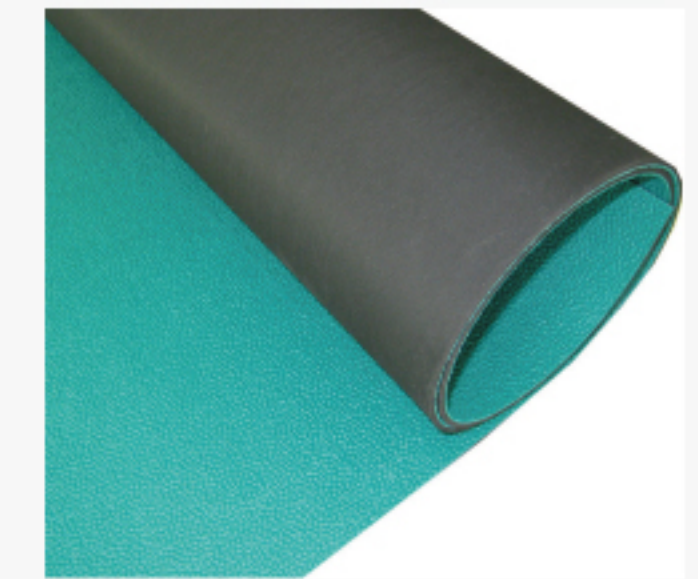
Rings and gaskets, matting protection.

Quality	Specific Gravity (g/cm ³)	Temperature (°C)	Color
EPDM	0.4-1	-40-+110	Black
SBR	0.4-1	-40-+110	Black
1-10mmx1-2mx10-20m			



1318 Orange peel rubber sheet

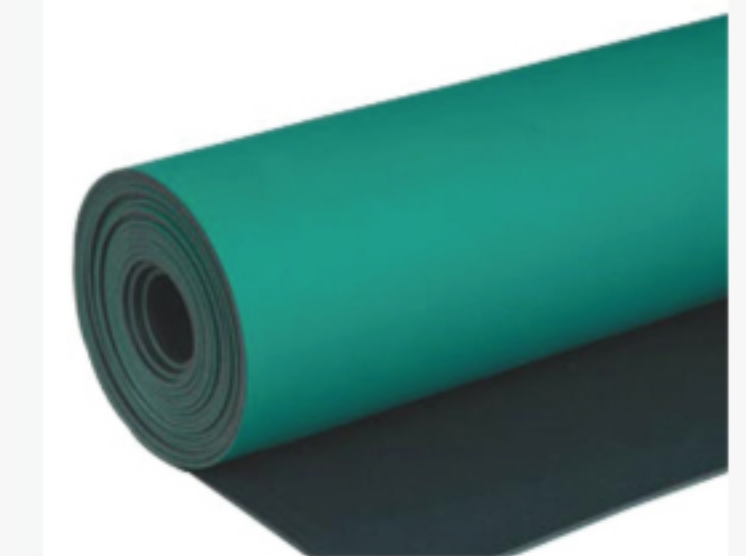
With a raised circular design on the surface, avoid slips and falls, good abrasion resistance.
Used for Entrances, ramps, building access door points for heavy wheeled vehicles or trolleys



Specific Gravity (g/cm ³)	Hardness (Shore A)	Tensile Strength (Mpa)	Length	Width	Thickness	Color
1.5	65±5	3	10m/15m	1.2m	3-8mm	Black with green
1-20mmx1-2mx10-20m						

1319 Anti-static rubber sheet

Excellent anti-static performance, easy clean and maintain, anti-corrosive and resistance to chemicals, endure high temperature.
Used for electric and electronics assembly, machinery, shipbuilding, transportation field

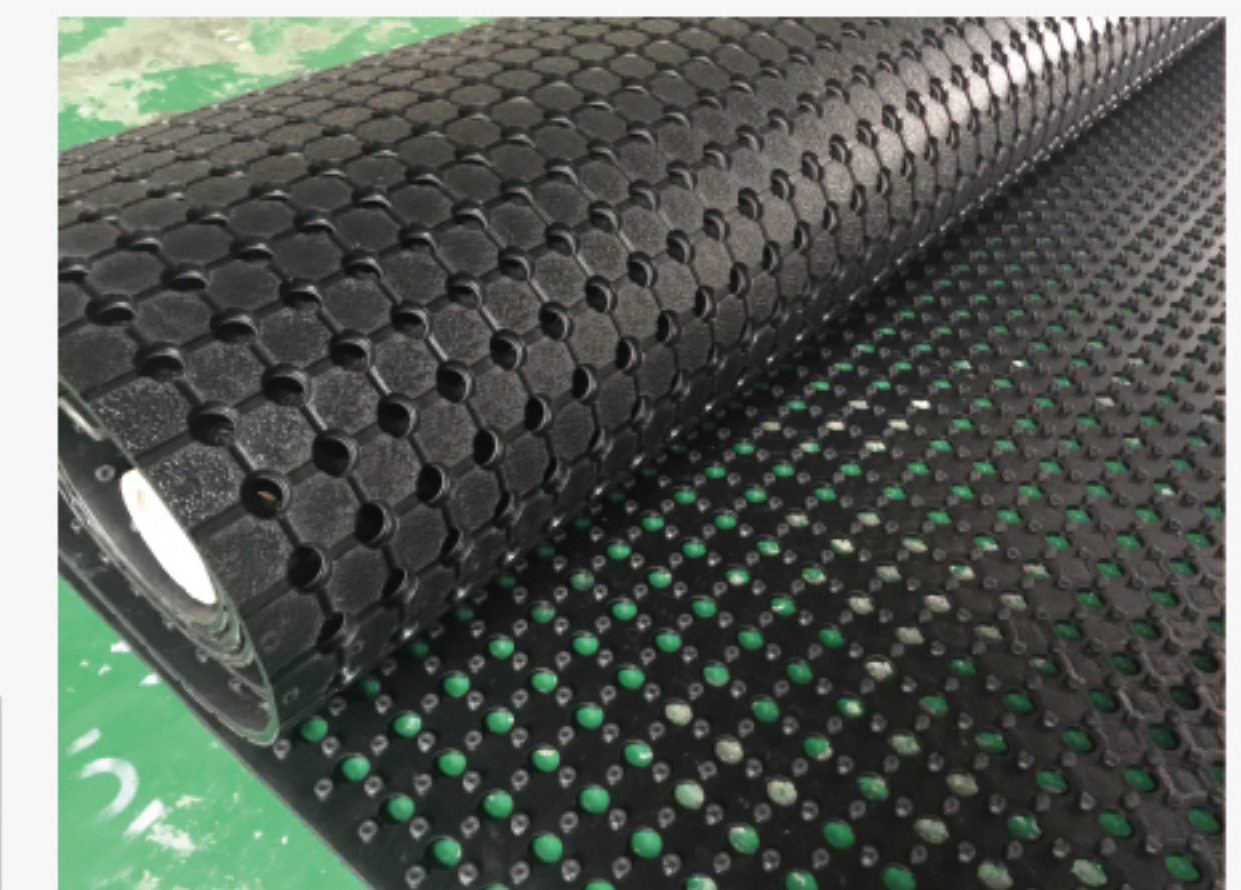


Specific Gravity (g/cm ³)	Hardness (Shore A)	Tensile Strength (Mpa)	Length	Width	Thickness	Color
1.5	65±5	3	10m/15m	1.2m	3-8mm	Black with green
1-20mmx1-2mx10-20m						

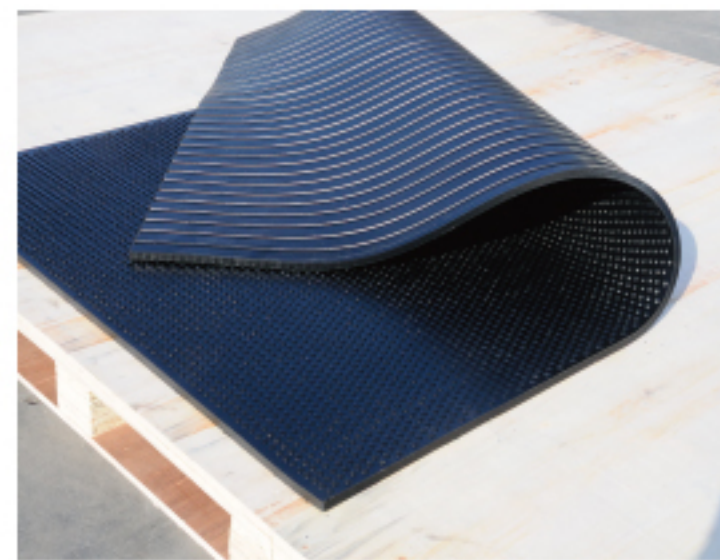
1321 Vent roll

Slip-resistant, anti-fatigue, crush-resistant, cushioned and anti-grease surface enhance productivity.
Available for truck, kitchen, bars, office building, apartment building, swimming pool, and industrial area.

Length	Width	Thickness
10m	1.83m	10mm

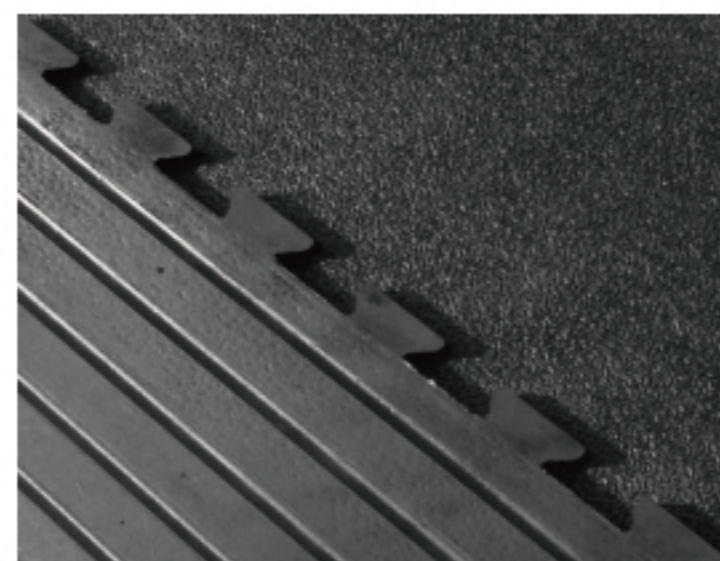


- With excellent anti-slip comfortable surface and easy to be cleaned
- Bottom grooved pattern is effective for drainage.
- Widely used in the livestock stables, calf and pig pens, walking area, machines floor, truck beds.
- Can be cut into interlocking pattern.



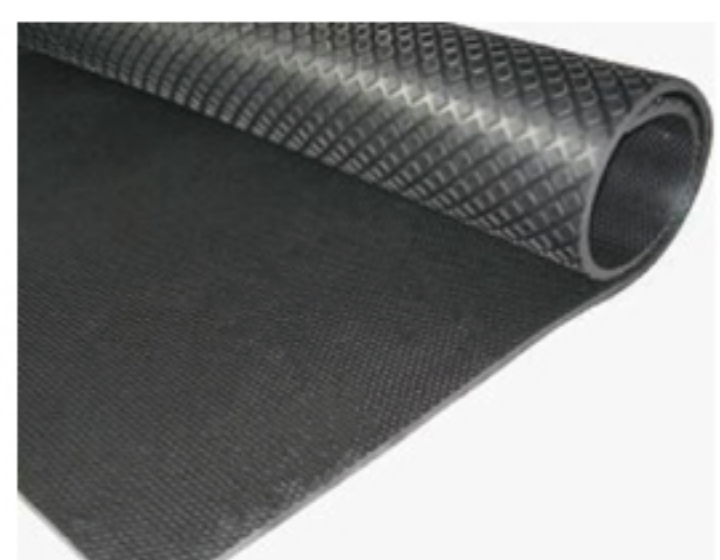
Cobbled top cow & horse mat

Product code	Size
1206-1	1220x1830x10mm
1206-2	1220x1830x12mm
1206-3	1220x1830x17mm



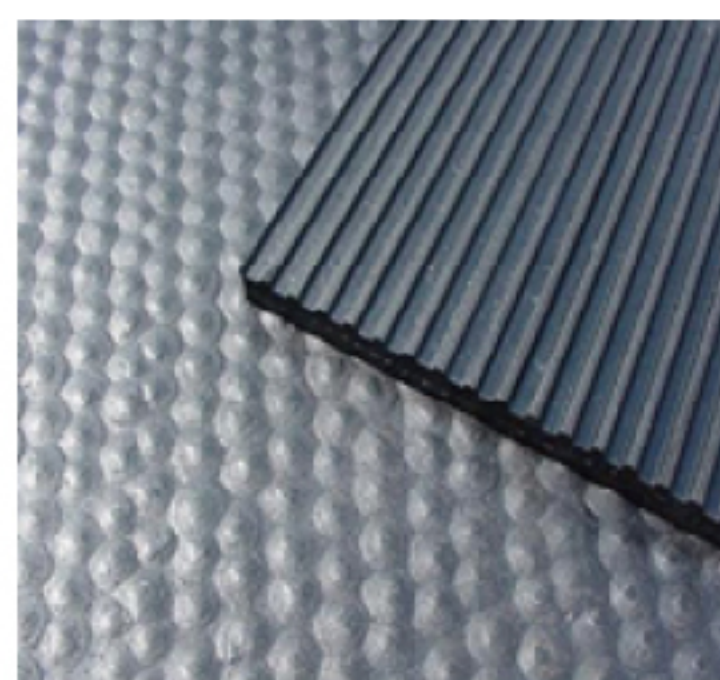
Interlocked stable mat

Product code	Size
1204-1	1220x1830x17mm
1204-2	600x600x17mm



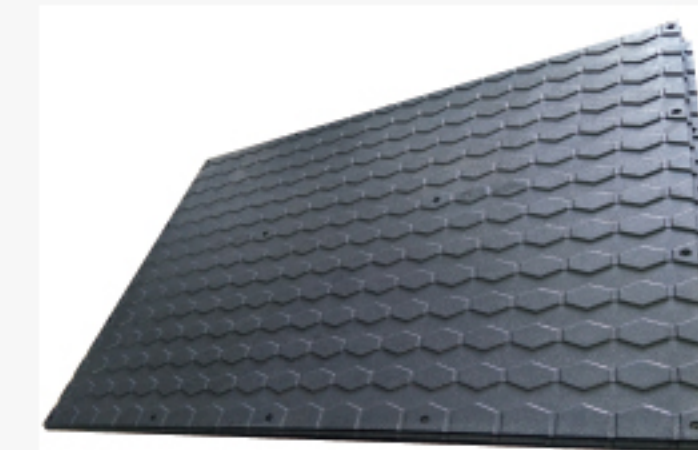
Hexagon rubber mat

Product code	Size
1205-1	1220x1830x12mm
1205-2	1220x1830x17mm
1205-3	600x600x12mm
1205-4	600x600x17mm



Hammer groove roll

Product code	Size
1207	10-30m x1.6-2.0m x6-25mm



Pig & sheep rubber mat

Product code	Size
1208	1220x1830x12mm



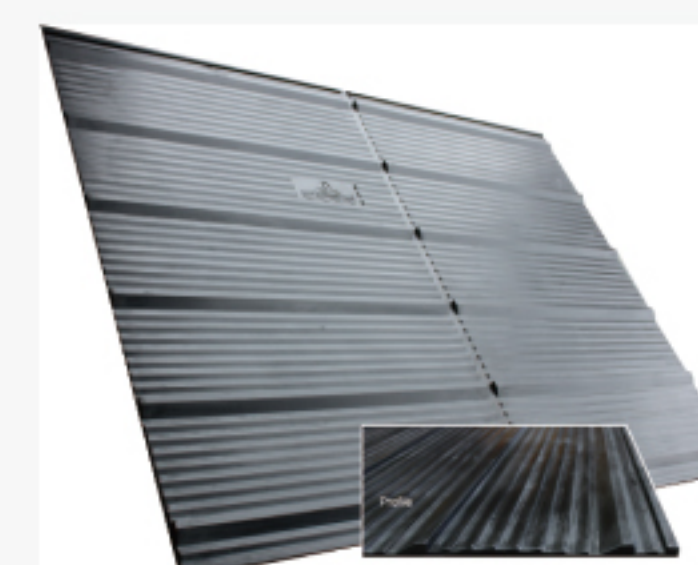
Catte rubber mat

Product code	Size
1201-2	1220x1830x17mm



Horse rubber mat

Product code	Size
1202	1220x1830x25mm

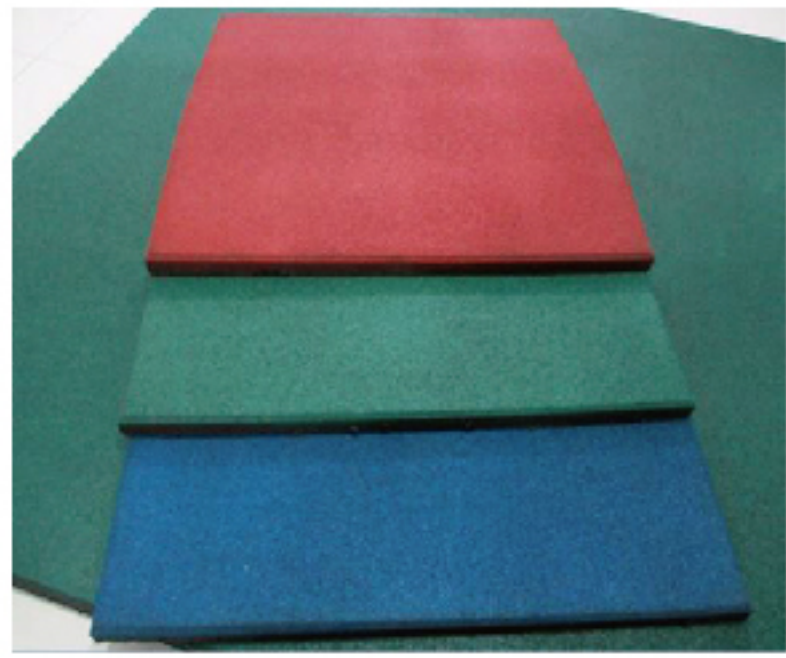


Trailer rubber mat(Ramp mat)

Product code	Size
1208	2000x1500x20mm

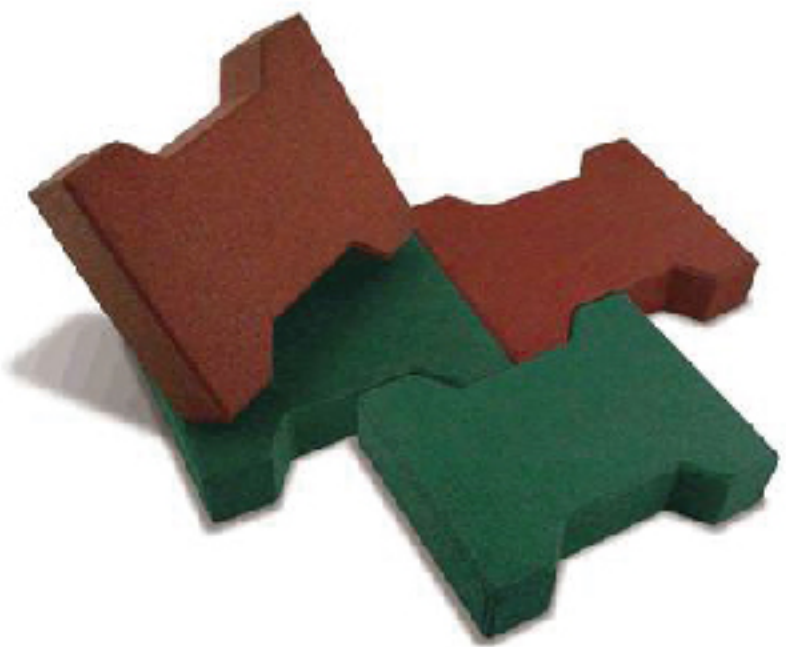
RUBBER TILE

Playground tile



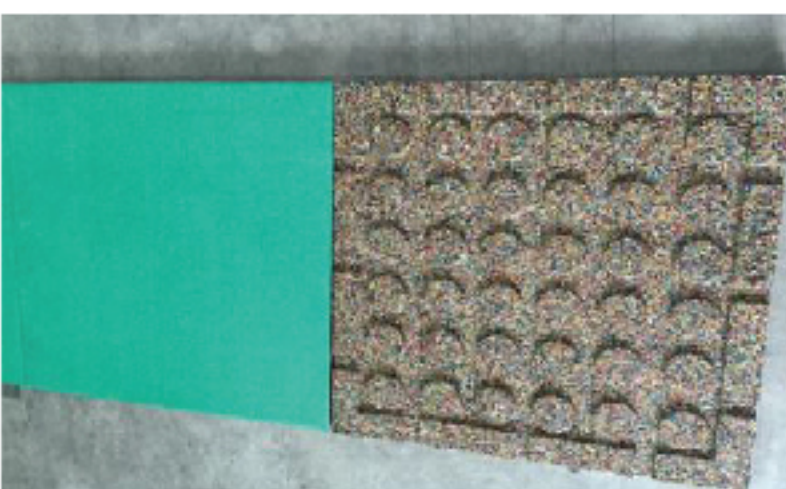
Product code	Tile Size	Edge size
1101-1	500x500x15mm	500x70x15mm
1101-2	500x500x20mm	500x70x20mm
1101-3	500x500x25mm	500x100x25mm
1101-4	500x500x30mm	500x100x30mm
1101-5	500x500x45mm	500x140x45mm
1101-6	500x500x60mm	500x140x60mm
1101-7	500x500x75mm	500x200x75mm
1101-8	1000x1000x15mm	
1101-9	1000x1000x25mm	
1101-10	1000x1000x30mm	

Dog bone paving tile



Product code	Size
1103-1	230x160x23mm
1103-2	230x160x43mm

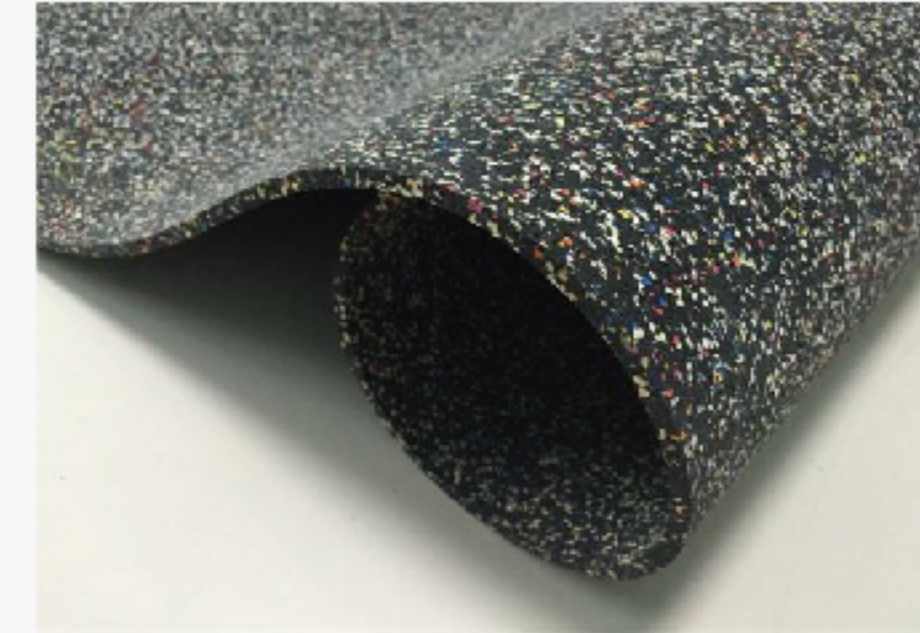
EPDM rubber tile



Product code	Size
1409-1	500x500x25mm
1409-2	500x500x30mm

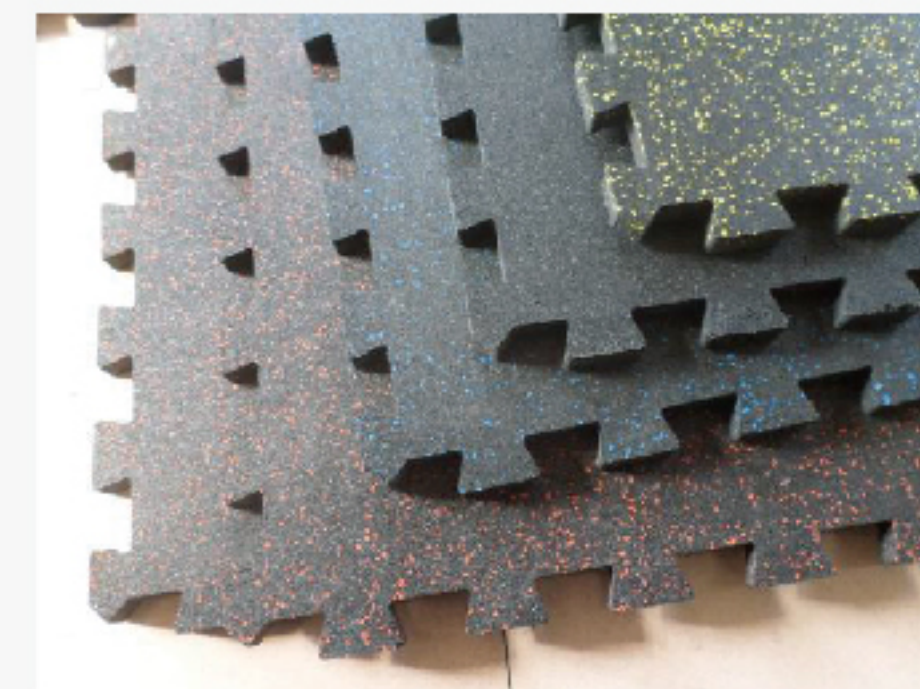
GYM MAT

Gym roll



Product code	Size
1403-1 single color	10m-20mx1.22-1.5mx3-12 mm
1403-2 multi-color	10m-20mx1.22-1.5mx3-12 mm

Gym tile



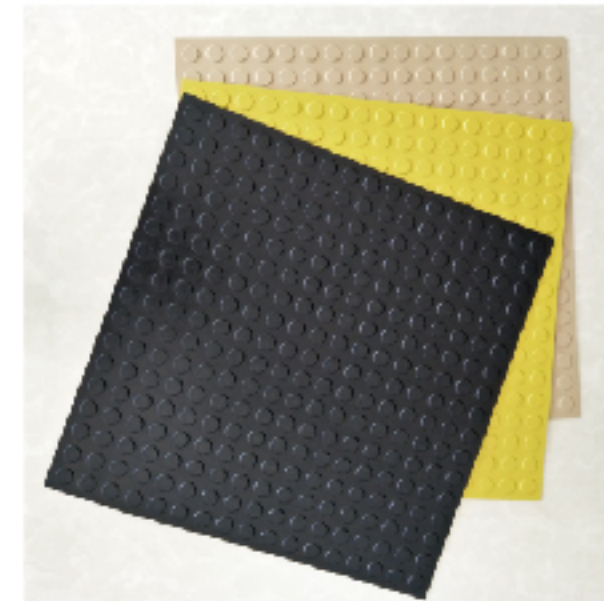
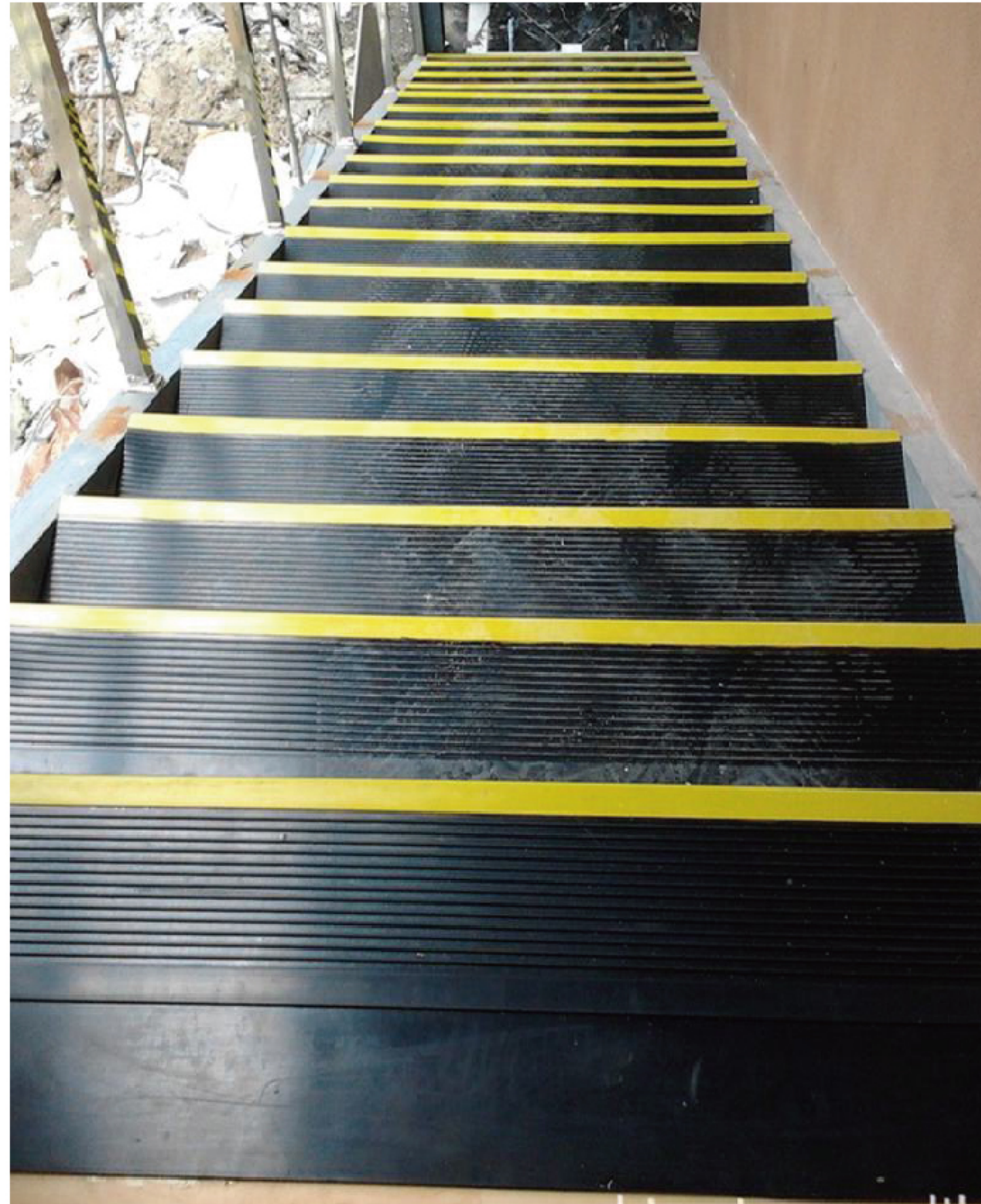
Product code	Size
1402-1	1000x1000x11mm
1402-2	1000x150x11mm
1402-3	150x150x11mm
1402-4	500x500x20mm
1404-1	1000x1000x3-12 mm
1404-2	600x600x3-12 mm
1404-3	500x500x3-12 mm

Prefabricated running track

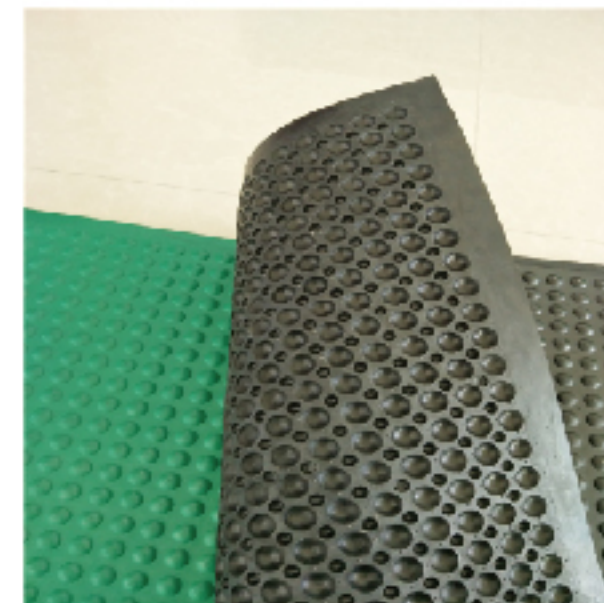


Product code 1411	
13mmx1.25mx10/15m	9mmx1.25mx10/15m
Anti-slip textured surface providing ideal protection and safety. Mostly used for running way, gym, tennis court etc. Any other color for example green, blue, grey, etc can be available.	

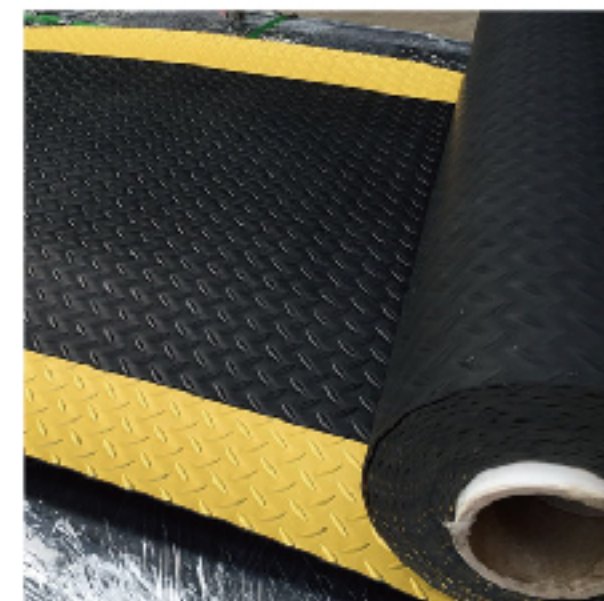
We are a specialist of all kinds of moulded rubber products



1815 Round dot rubber tile
Specification: 500 * 500 * 3mm
Color: Yellow, Grey, Black



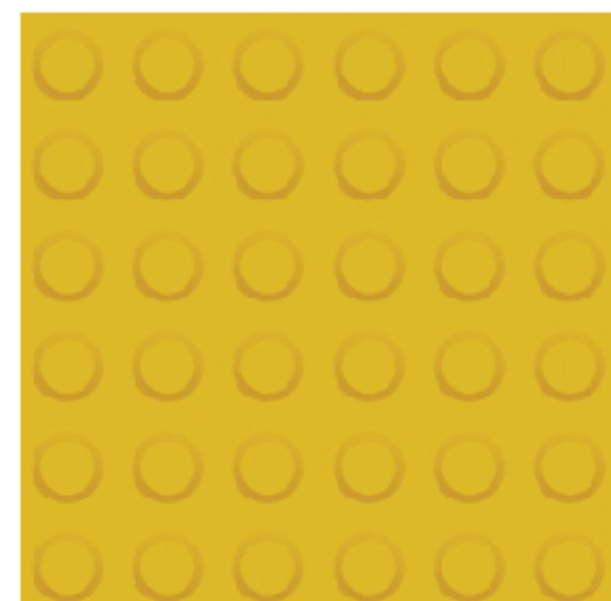
1814 Mushroom rubber mat
Specification: 610 * 915 * 12.7mm
Color: Green, Black



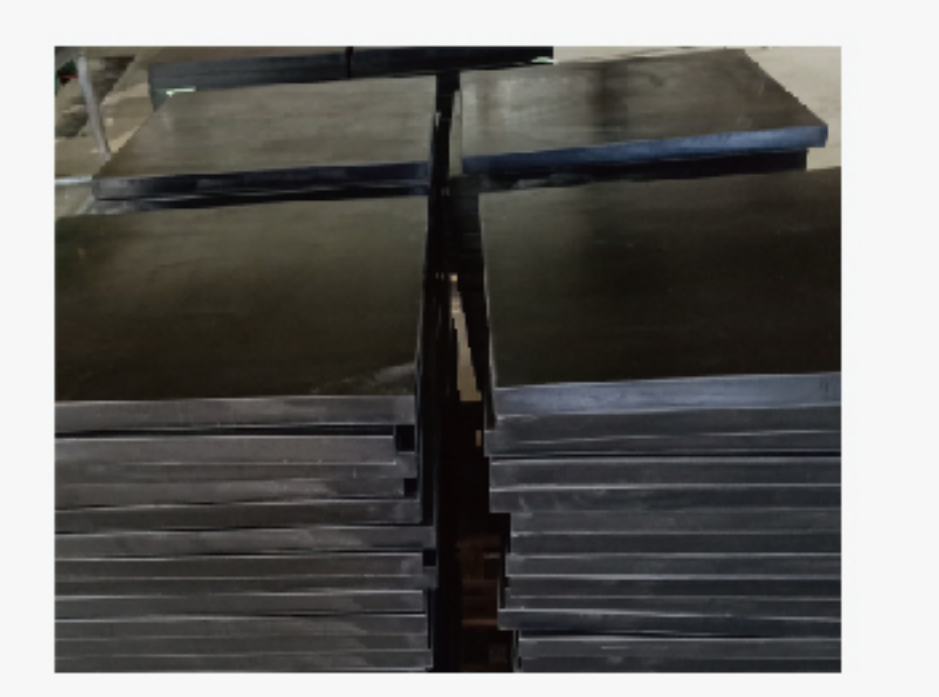
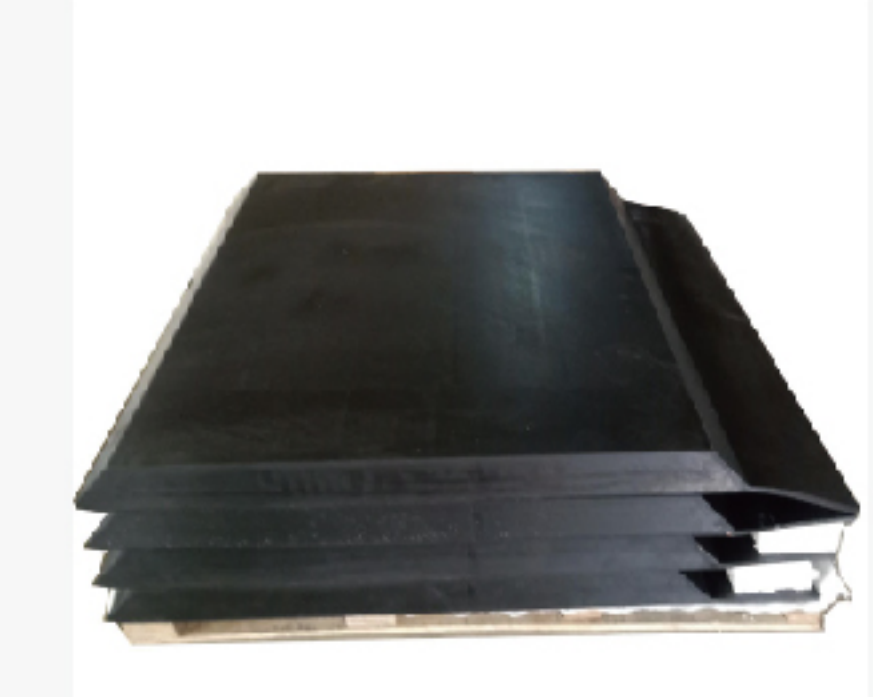
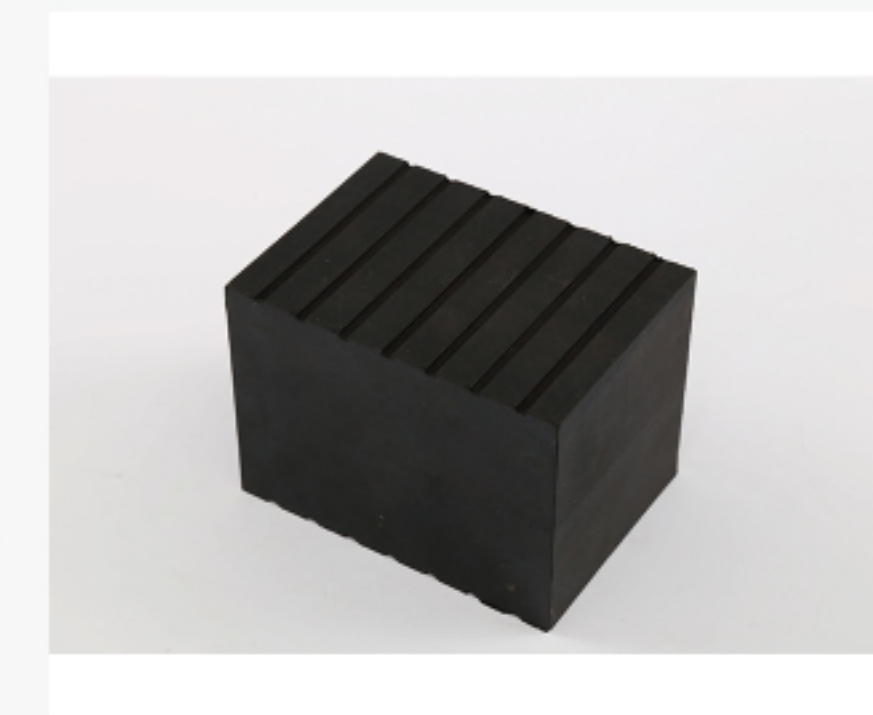
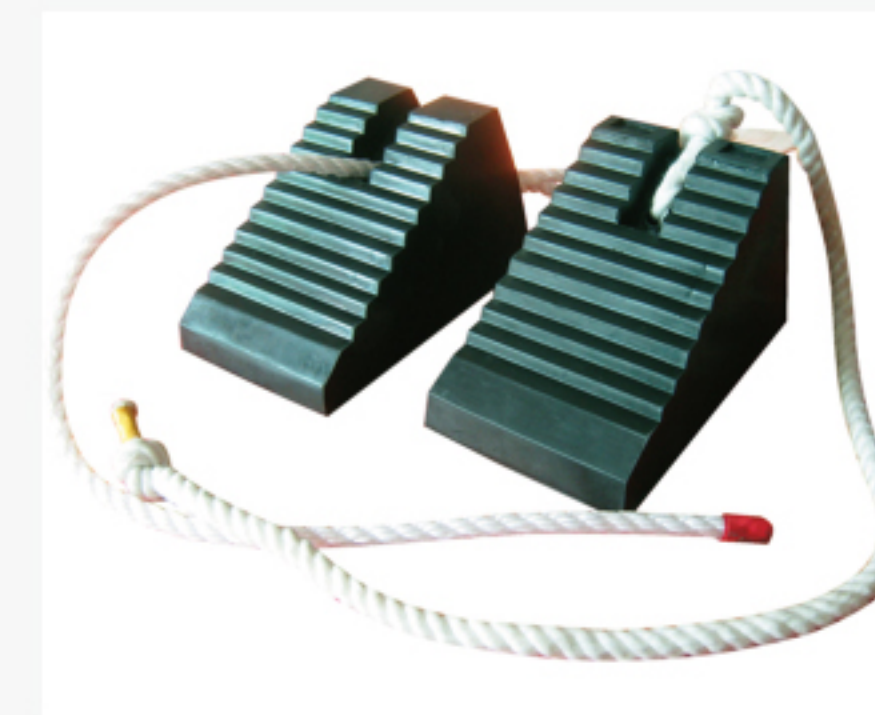
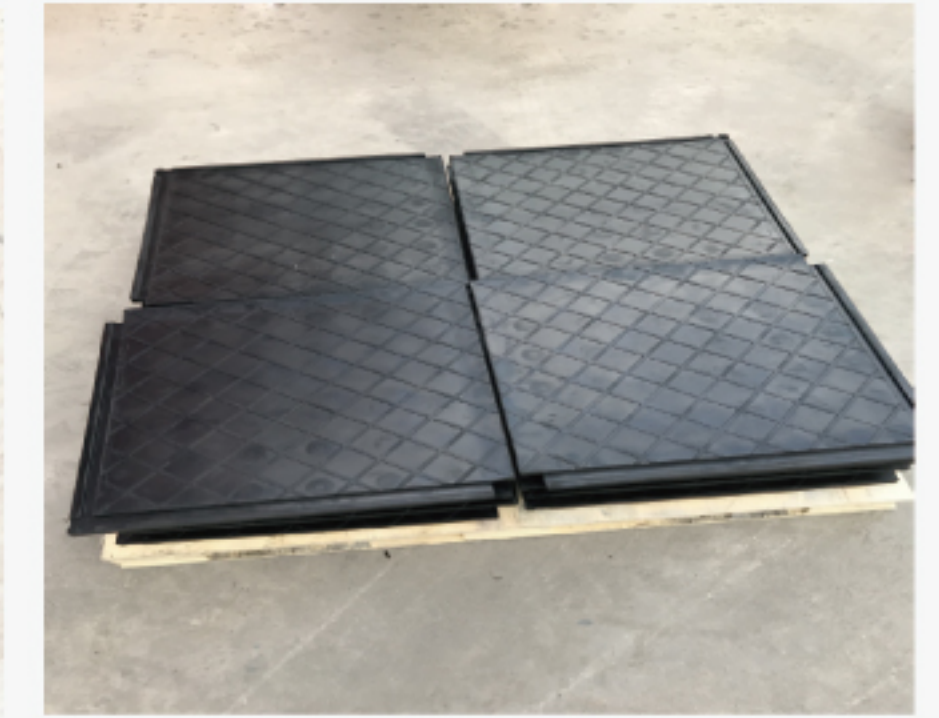
1604 Anti-static sheet with warning edge
Specification: 0.9m * 10m * 3mm
Color: Black with yellow edge, gray.



1801 rubber stair treads
Specification: 300mm * 1.2m / 1.5m * 5mm
Color: Gray, Black with yellow edge.



1816 Tactile floor tile
Specification: 300 * 300 * 7mm - 8.5mm
Color: Yellow, Grey



Cutting



Packing



Warehouse



Loading

